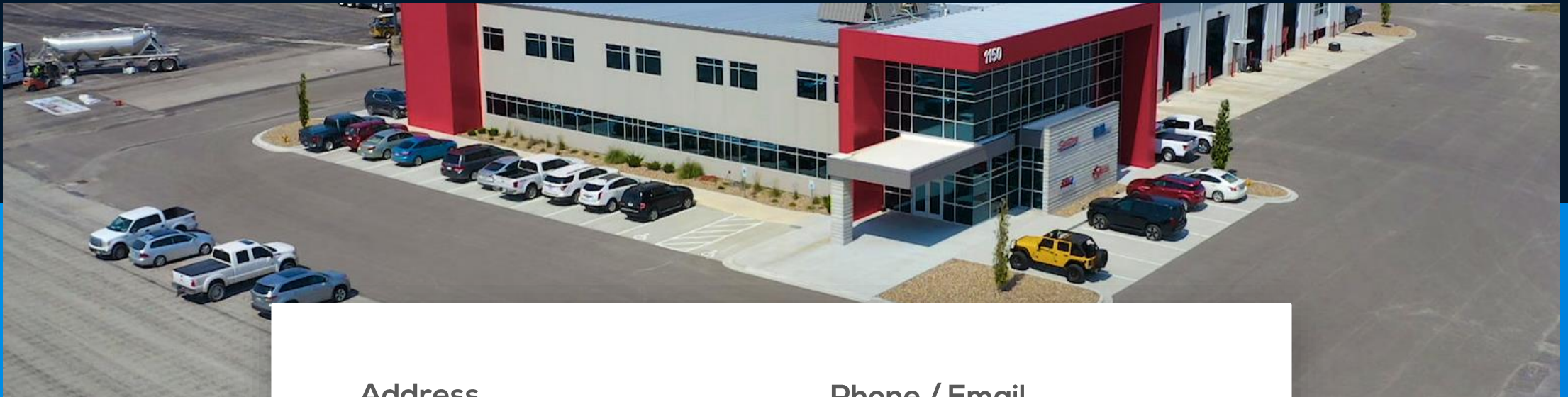






# — Louis Fuselier —

B U S I N E S S   D E V E L O P M E N T  
M A N A G E R



## Address

1150 SE Hamblen Rd  
Lee's Summit, MO 64063

## Phone / Email

 816-380-4747

 [sales@fastracproducts.com](mailto:sales@fastracproducts.com)

# About FasTrac

01.



# A History of Innovation

## FasTrac is the Industry Standard.

Western Material & Design and Cornerstone Construction Material have combined efforts to provide innovative, high-quality cement, epoxy and polymer products for the heavy construction industry.



founded  
**1988**



founded  
**2013**



Joint  
**Brand**

*Over 30 years experience developing and manufacturing cutting edge products.*

# Our Mission



**To Lead the Industry with  
Exceptional Products and  
Unmatched Customer Service.**

With more than 30 years experience developing and manufacturing cutting edge products, FasTrac is known for performance and consistency.



**100%**

EXPERTS IN THE INDUSTRY



**100%**

DRIVEN BY YOUR SUCCESS

# Concrete Roadway and Bridge Deck Repairs

02.

The Concerns



**03. The Solution**

# FasTrac Hybrid Polymer Concrete



BACKED BY  
**30+**  
YEARS  
EXPERIENCE

## The next generation in high performance polymer concrete

FasTrac CE700 HPC is a three-component hybrid polymer concrete system containing engineered polymer resins and specially selected aggregates.







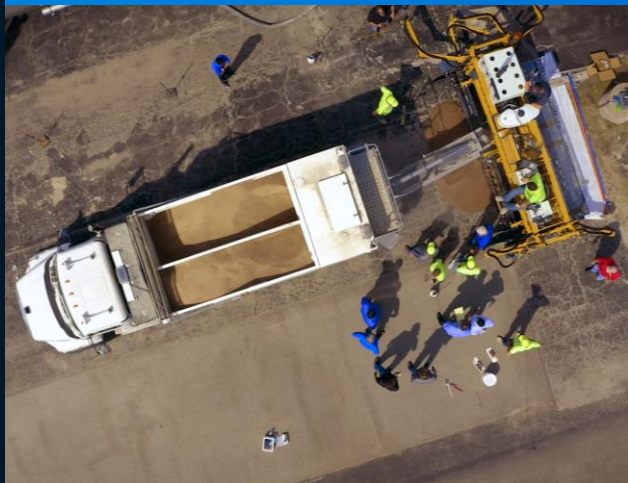
HYBRID POLYMER CONCRETE

# Flexible like Asphalt. Strong like Concrete.

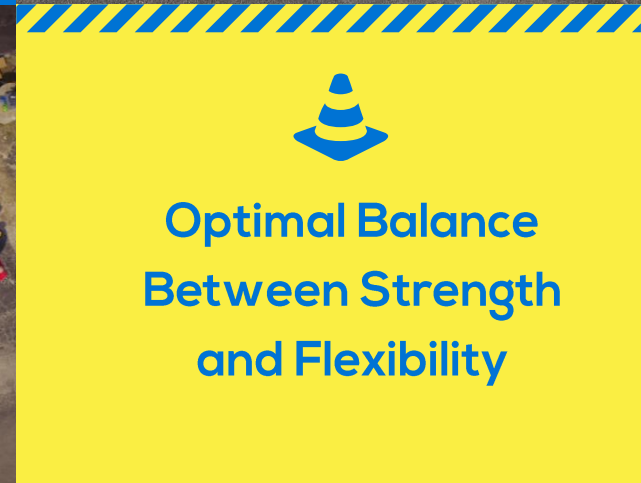
When properly mixed, the reacted chemistry produces a durable polymer concrete composite designed for bridge deck overlays, patching, and resurfacing applications.



Impermeability  
Provides for  
Excellent Bridge  
and Road  
Preservation



Optimal Balance  
Between Strength  
and Flexibility



Exceptional  
Tensile Bond  
Strength





HYBRID POLYMER CONCRETE

# Work Faster, Work Better, Work Smarter

FasTrac CE700 was designed with speed in mind. Traffic-ready in less than three hours without the need for a primer, and technical support from the experts at FasTrac ensure your next project is a success.



24/7 Tech Support  
from Experience  
Technicians



Self-Priming.  
No Primer  
Required.



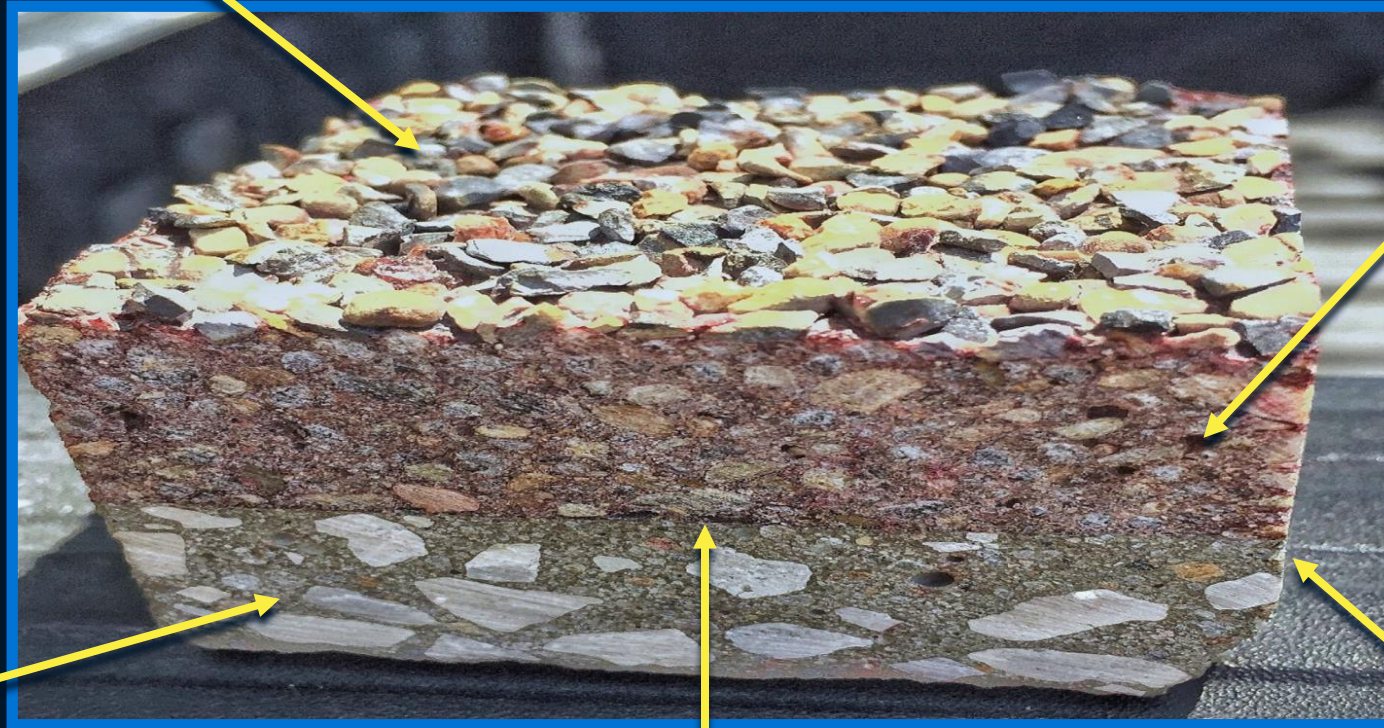
Rapid Return to  
Traffic in Less  
Than 3 Hours





Friction Aggregate

FasTrac CE700  
HPC Polymer  
Concrete



Concrete

Self-Priming

Concrete Bond  
Line

# Additional Benefits



## No Volatile Chemicals and Zero VOC



All components blend easily together producing a consistent, high-performance material.

Ideal for bridge deck resurfacing, concrete repair, grade correction, slab repair, expansion joint headers, runway and taxiway repair, and elevated parking structure overlays.



Engineered Mixing Equipment

**Custom Volumetric  
Mixer Provides  
Consistency**

**Tined**  
to Produce a Traction Profile



Our custom paver places HPC from a 0.75-inch overlay up to 12 inches.

Custom Aggregate Spreader  
**Smooth & Safe**



*High tensile and flexural strength* overlay featuring rapid strength gain.



**Choose your thickness**

As Thin As... 0.75 Inches

As Thick As... 12 Inches

Optional friction aggregate surface can be added for increased traffic safety.



Durable performance in extreme climatic conditions, with no shrinkage and excellent thermal compatibility.

All FasTrac Construction Products  
*Made in the USA.*



High Tensile and  
Compressive Strength

2,000  
psi

Tensile

5,000  
psi

Compressive

Developed, Manufactured and Tested at our facility in Archie, MO.

## FasTrac CE700 HPC

The next generation in high-performance polymer concrete.



# FASTRAC RANKS #1 IN RECENT STUDY

Here are the final results from the 3 yr. study on patching products conducted at the MNROAD facility in Minnesota.

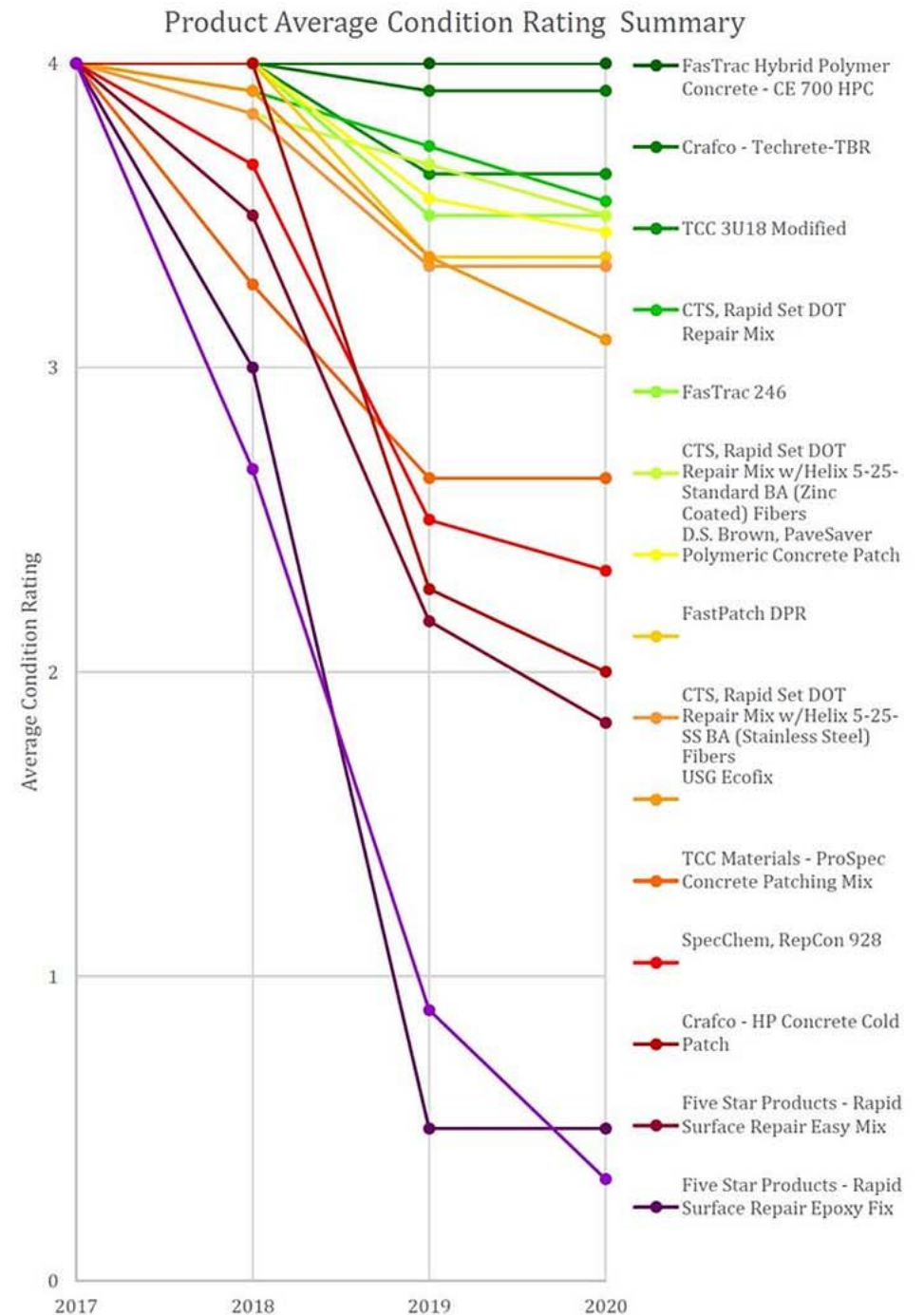
**Hybrid Polymer Concrete only product to receive a perfect score!**



PATCH IN 2018



PATCH IN 2020





# HPC Projects 04.





# Featured Projects

Successful projects featuring FasTrac Hybrid Polymer Concrete



Redding, CA



Yazoo County, MS



DFW Airport, TX



Sedalia, MO



Franklin Co, MO



Los Angeles, CA

# Franklin County, Missouri



# Los Angeles, California – CALTRANS



## No Odors & Zero VOC

No dangerous toxic emissions and safe to use.



## Rapid Return to Traffic

Return to traffic in less than 3 hours.



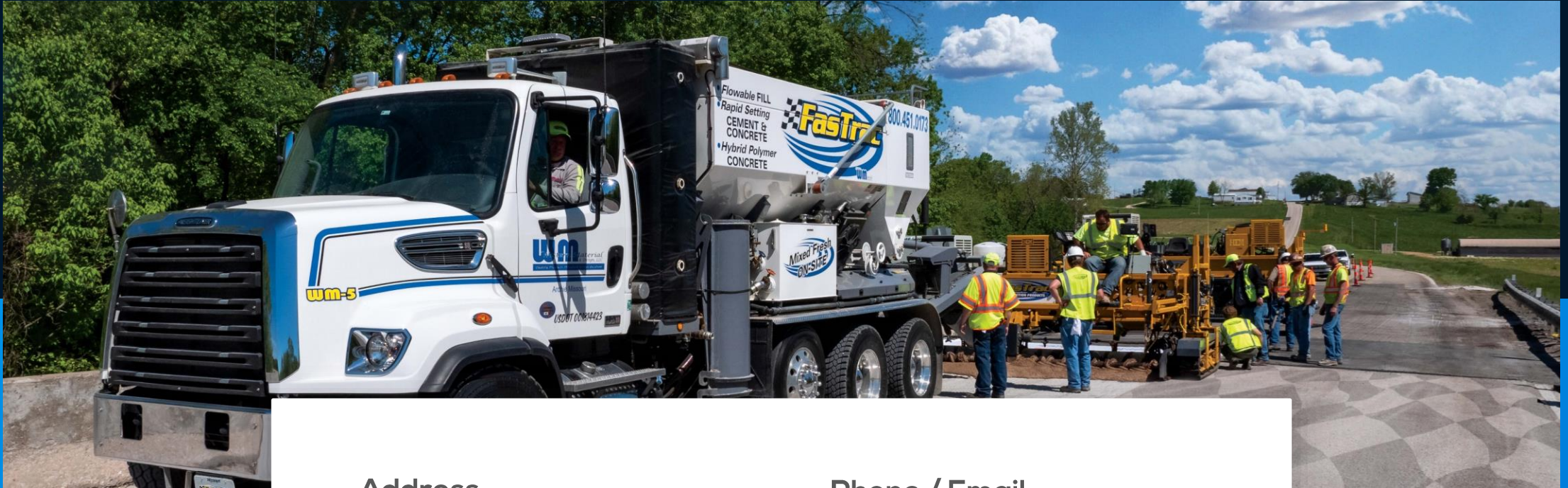
## Outstanding Bond & Resilience

Long-term durability.

The I-405 project was the fourth HPC specified project by CALTRANS, and on the busiest section of road in North America. FasTrac Hybrid Polymer Concrete now provides CALTRANS a safe and environmentally friendly high-performance material.



# Contact Us



## Address

1150 SE Hamblen Rd  
Lee's Summit, MO 64063

## Phone / Email



816-380-4747



[sales@fastracproducts.com](mailto:sales@fastracproducts.com)

A blue-tinted background image of a Fastrac concrete mixer truck. The truck is white with blue accents and features the Fastrac logo and text: "Flowable FILL", "Pump Setting CEMENT & CONCRETE", "Hybrid Polymer CONCRETE", "Fastrac", "800.451.173", and "MAKES ON-SITE".

**Thank You.**

[www.fastracproducts.com](http://www.fastracproducts.com)